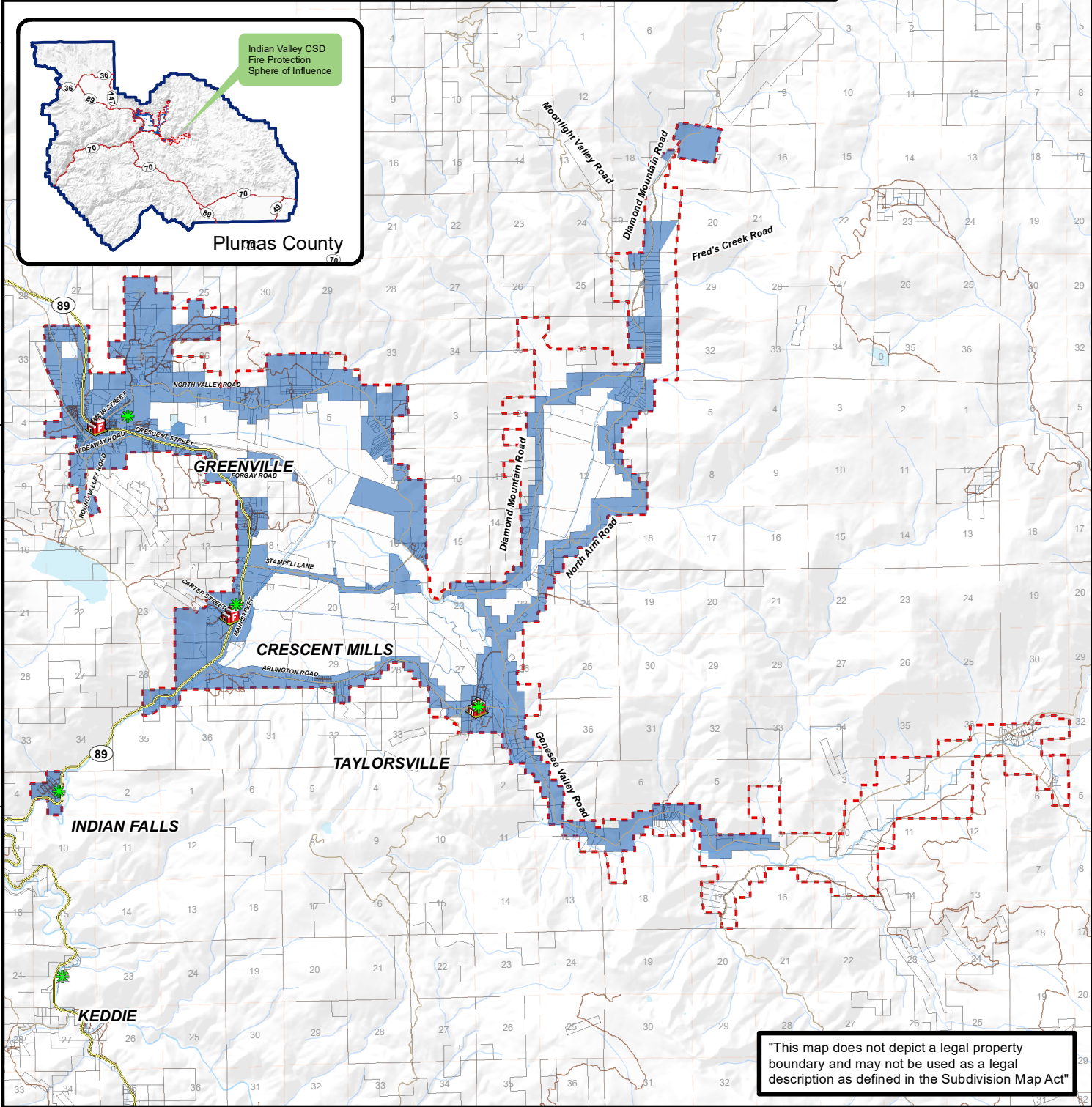
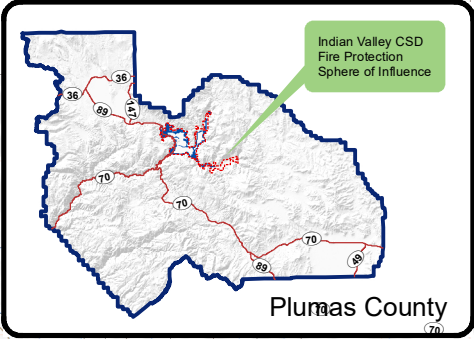


PLUMAS COUNTY LAFCO INDIAN VALLEY COMMUNITY SERVICES DISTRICT AND FIRE PROTECTION SPHERE OF INFLUENCE

Township 27 North

Township 26 North

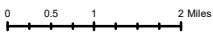
Township 25 North



"This map does not depict a legal property boundary and may not be used as a legal description as defined in the Subdivision Map Act"

Legend

- Highways
- Major Roads
- Stream / River
- Waterbodies
- Parcels
- Sectional Grid (MDB&M)
- Indian Valley Fire Protection Sphere of Influence
- Indian Valley CSD
- Indian Valley Fire Protection Sphere of Influence
- Fire Station
- Communities



Indian Valley CSD Consolidation
Resolution: 2025-02
Adopted: June 9, 2025
Effective: August 1, 2025
Indian Valley Sphere Of Influence
Resolution: 2015-0007
Adopted: October 5, 2017
Source: Plumas LAFCo Map Modified 2/18/2026